

Hinsdale Central High School

Some of the things that go into the 69th
best high school in the country
according to *U.S. News & World Report*

▲ RANK	SCHOOL	CITY	STATE	STUDENT/ TEACHER RATIO	GRAD RATE	AP/IB TESTS	COLLEGE BOUND (%)	AVG SAT	NEWS- WEEK SCORE
69	Hinsdale Central	Hinsdale	IL	20	98	2.9	97	1853	0.877

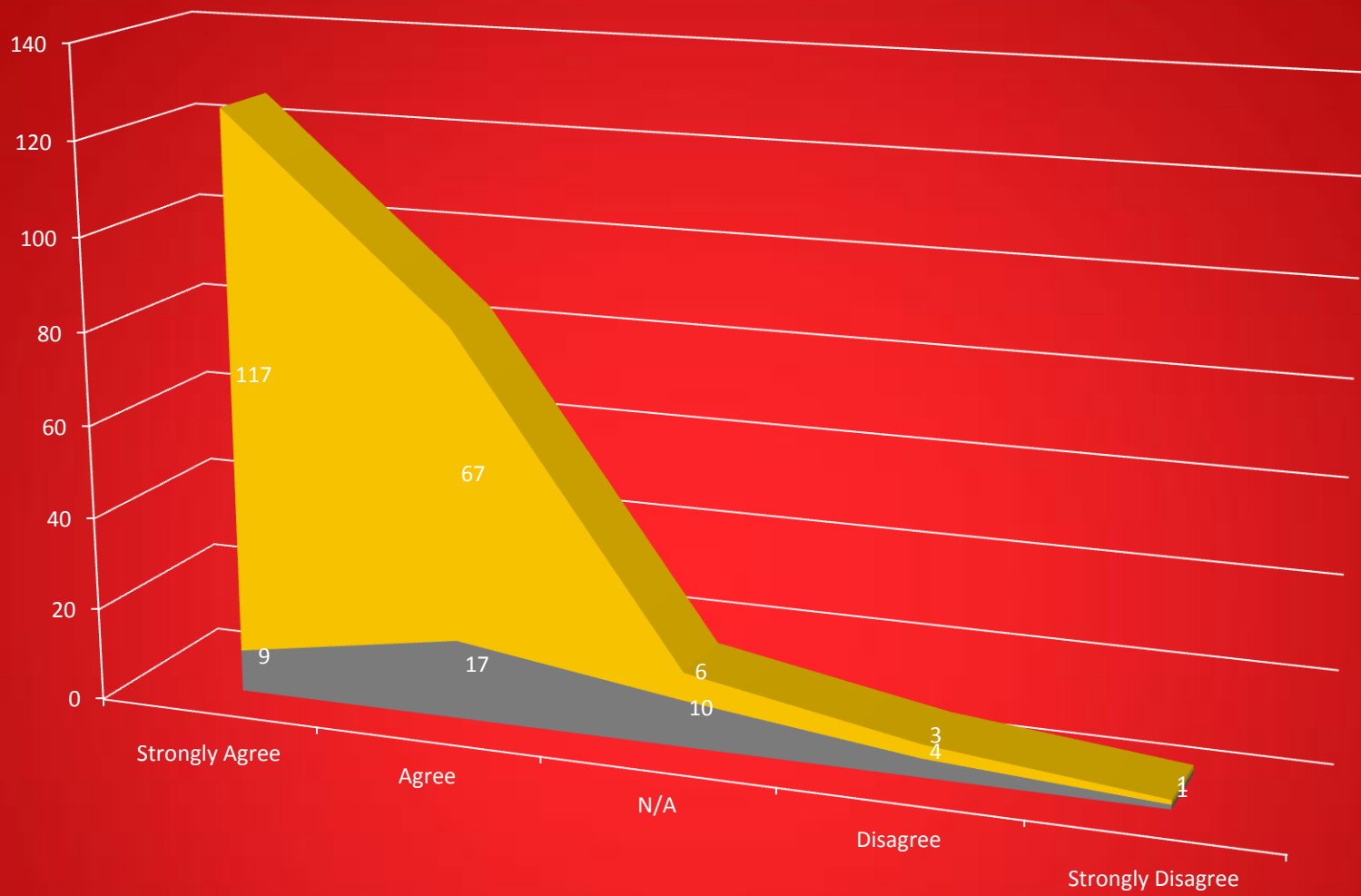
Excellent School-Home Communication & Support

Format & Statistics from 2010-2011 School Year:

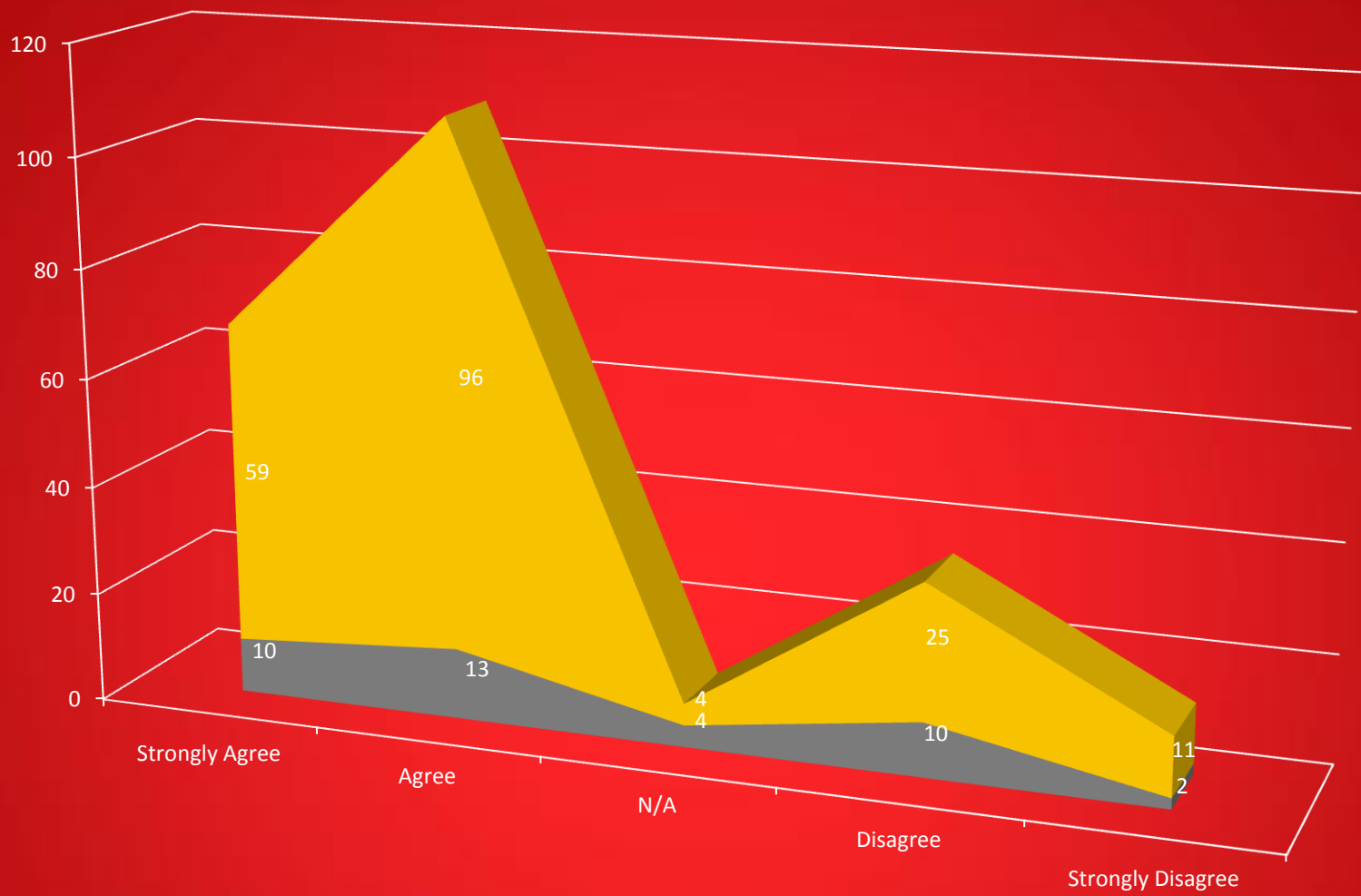
- Conferences held in early November from 1-4 p.m. & 6-9 p.m.
 - 52% of parents requested
 - 4,858 face-to-face conferences
 - 1,954 teacher call backs

Format & Statistics from 2011- 2012 School Year:

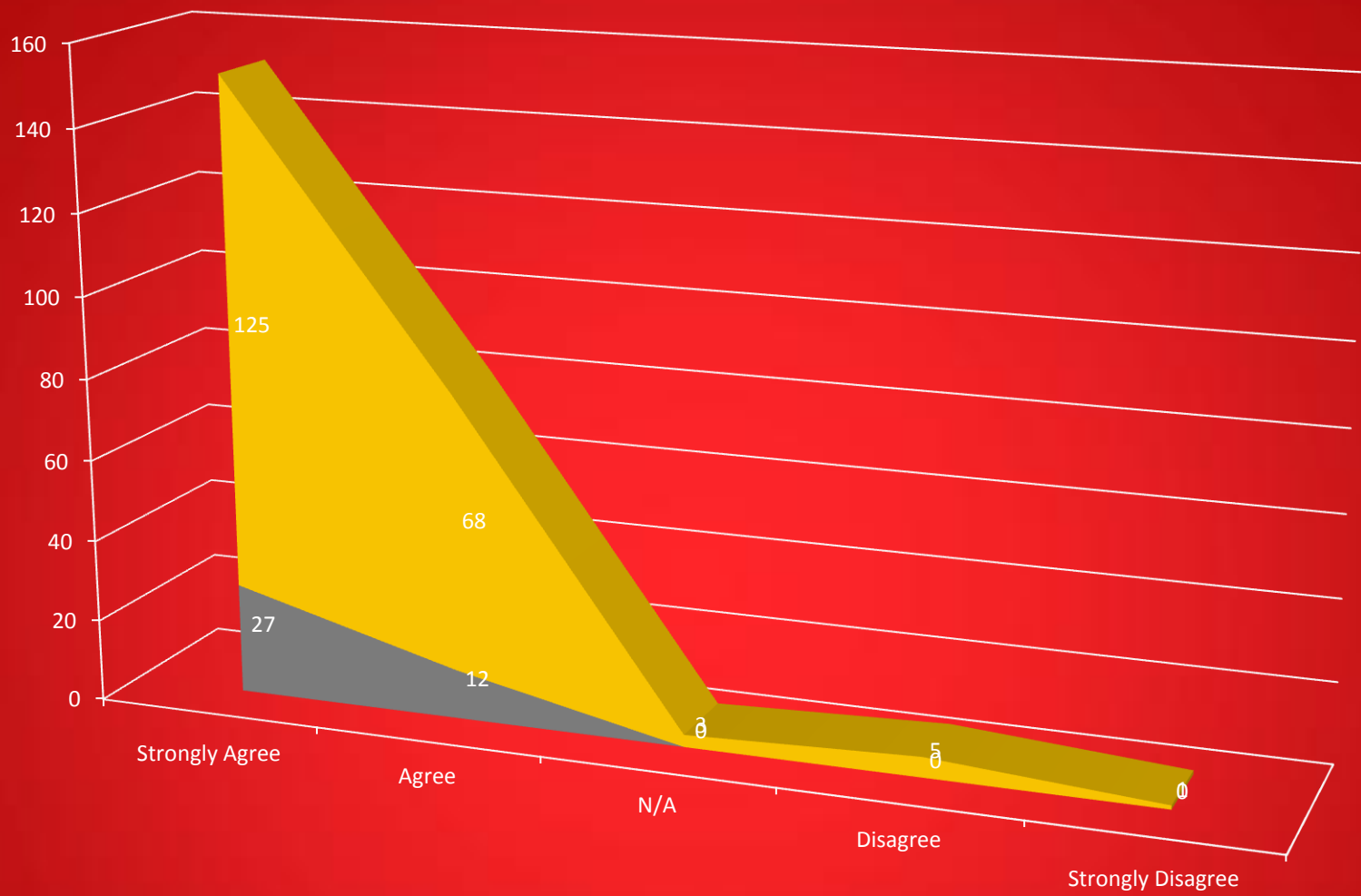
- Conferences held in early November from 6-9 p.m. on Thursday & 8 a.m.-3 p.m. on Friday.
 - 56% of parents requested
 - 7,120 face-to-face conferences (**UP 47%**)
 - 641 teacher call backs (**Down 67%**)



	Strongly Agree	Agree	N/A	Disagree	Strongly Disagree
■ Friday, November 4, 2011 Having Parent Teacher Conference Sessions available on Friday, November 4 is a good option for me as a parent/guardian.	117	67	6	3	1
■ Thursday, November 3, 2011 Having Parent Teacher Conference Sessions available on Friday, November 4 is a good option for me as a parent/guardian.	9	17	10	4	1



	Strongly Agree	Agree	N/A	Disagree	Strongly Disagree
■ Friday, November 4, 2011 A 7-minute conference session was enough time to discuss my student's academic progress with the teacher.	59	96	4	25	11
■ Thursday, November 3, 2011 A 7-minute conference session was enough time to discuss my student's academic progress with the teacher.	10	13	4	10	2

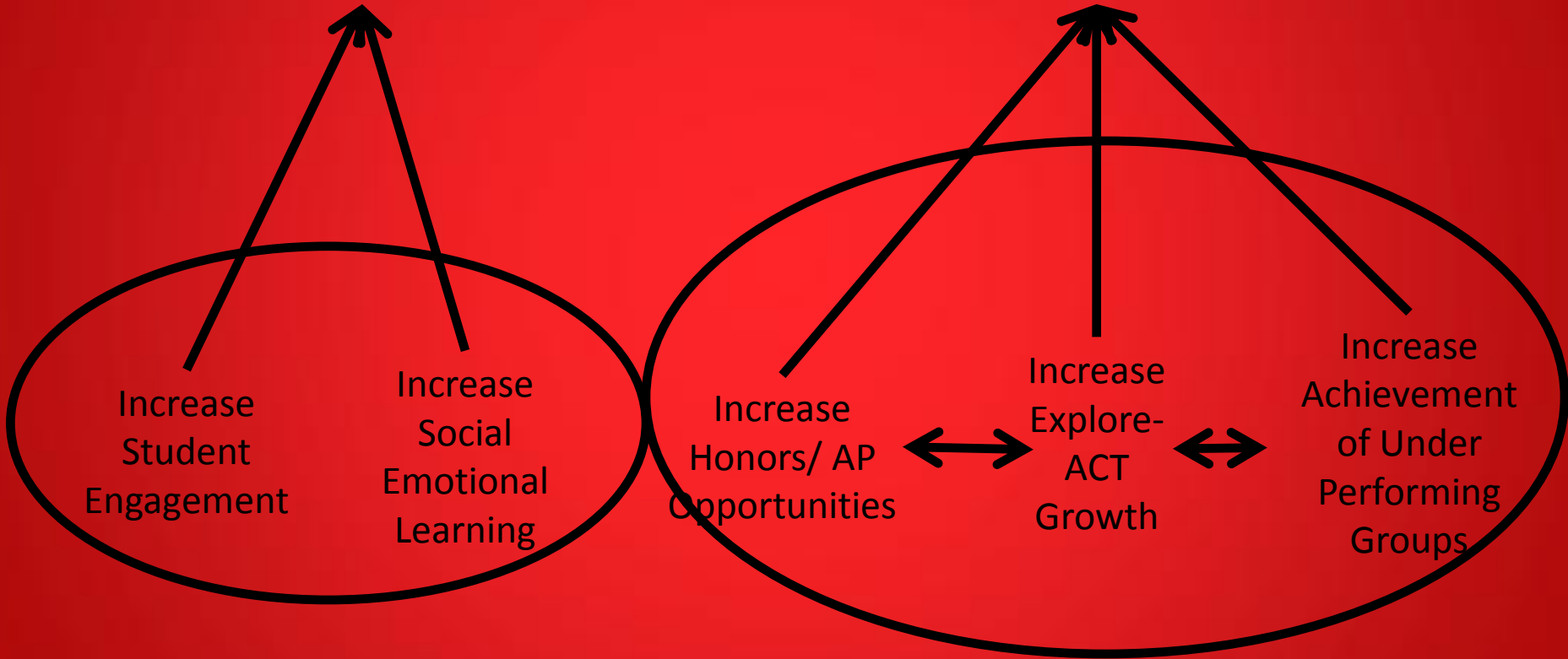


	Strongly Agree	Agree	N/A	Disagree	Strongly Disagree
■ Friday, November 4, 2011 The online registration process is convenient for me as a parent/guardian to request conferences.	125	68	3	5	1
■ Thursday, November 3, 2011 The online registration process is convenient for me as a parent/guardian to request conferences.	27	12	0	0	0

Tradition of Excellence

Increase Student Well-Being

Increase Student Achievement



Composite ACT Scores & Explore-ACT Growth

Graduation Year	Central Average ACT	Central Growth
2007	26.2	7.2
2008	26.2	7.3
2009	26.9	8.2
2010	27.2	8.4
2011	27.1	8.3
2012	27.2	8.6

*The ACT National Average is: **21.1**

*The Illinois ACT Average is: **20.9**

(ACT, 2011)

Explore-ACT Reading Growth

D86 Reading Explore Range 2003-Present	D86 Average Growth 2003-Present	Central Grad Year 2011
9 to 13	7	7
14 to 18	8.7	9.9
19 to 22	8	9.7
23 to 25	7.7	7.9

* US Reading growth from Explore-ACT: 5.6 (ACT, 2009)

Explore-ACT English Growth

D86 English Explore Range 2003-Present	D86 Average Growth 2003-Present	Central Grad Year 2011
9 to 14	6	7.5
15 to 18	7.4	9.6
19 to 22	7.9	8.9
23 to 25	8	8.5

* US English growth from Explore-ACT : 4.7 (ACT, 2009)

Explore-ACT Math Growth

D86 Math Explore Range 2003-Present	D86 Average Growth 2003-Present	Central Grad Year 2011
11 to 15	5	5.2
16 to 18	7	8.5
19 to 22	7.3	9.4
23 to 25	7.5	8.4

*US Math growth from Explore-ACT: 4.4 (ACT, 2009)

Explore-ACT Science Growth

D86 Science Explore Range 2003-Present	D86 Average Growth 2003-2012	Central Grad Year 2011
12 to 16	5	6.7
17 to 19	5.8	6.8
20 to 22	6.6	7.7
23 to 25	5.7	6.9

* US Science growth from Explore-ACT: **3.3**(ACT, 2009)

AP/Honors Successes

More Students + More Tests=Same High Success!

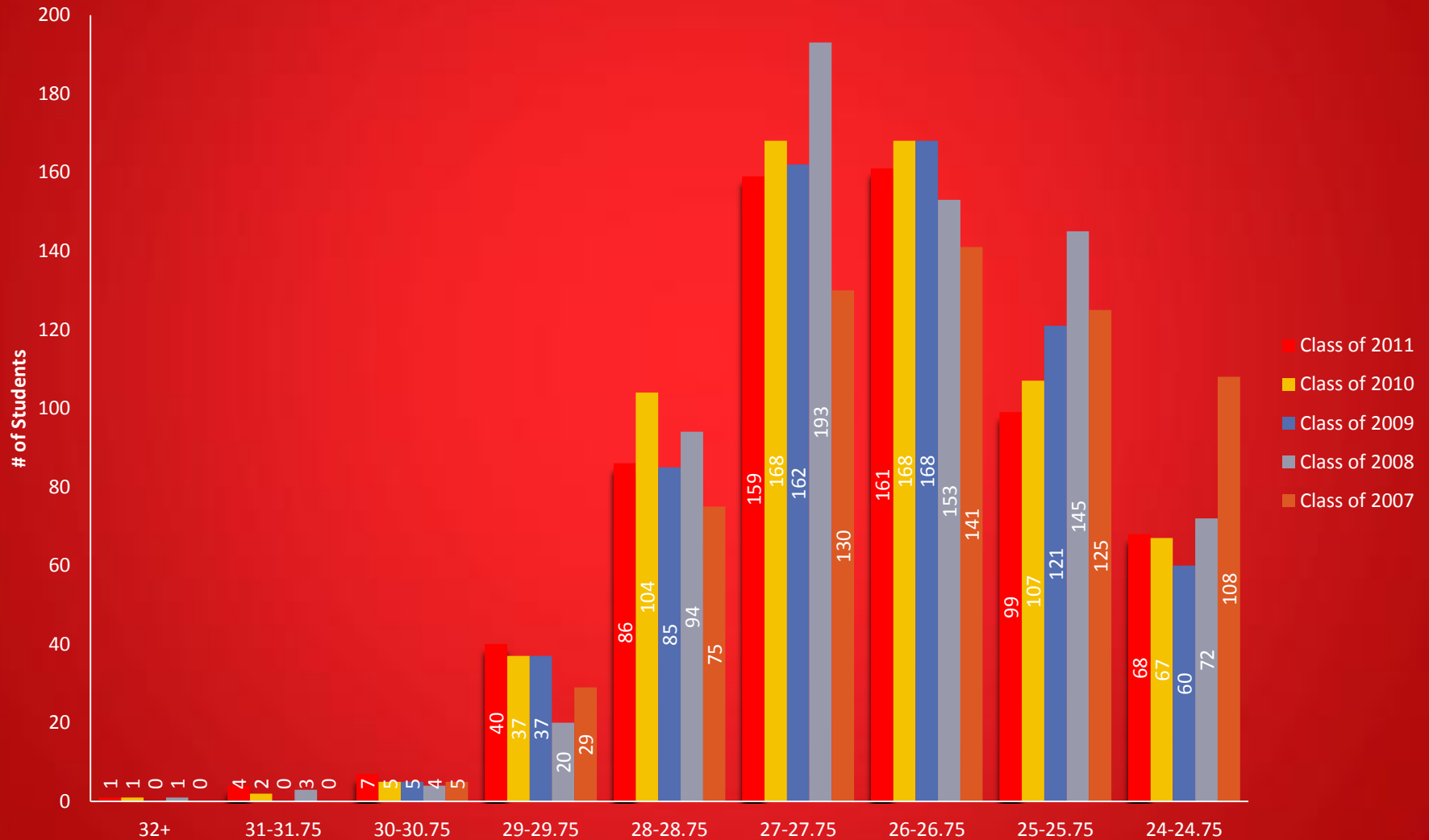
Year	Students enrolled	# of tests Administered	# 3s, 4s, 5s	% 3s, 4s, 5s	# 4s & 5s	% 4s, 5s
2010	1,951	1,776	1,620	91.2%	1,262	71%
2011	2,106	1,822	1,647	90.4%	1,308	69%

Active & Engaged Students cont'd.

We use many indicators to show that our students are active & engaged, however, the following ones indicate engagement linked to academic outcomes:

1. Number of Credits earned by Graduating class.
2. Average Number of credits by Graduating class.
3. College matriculation data.

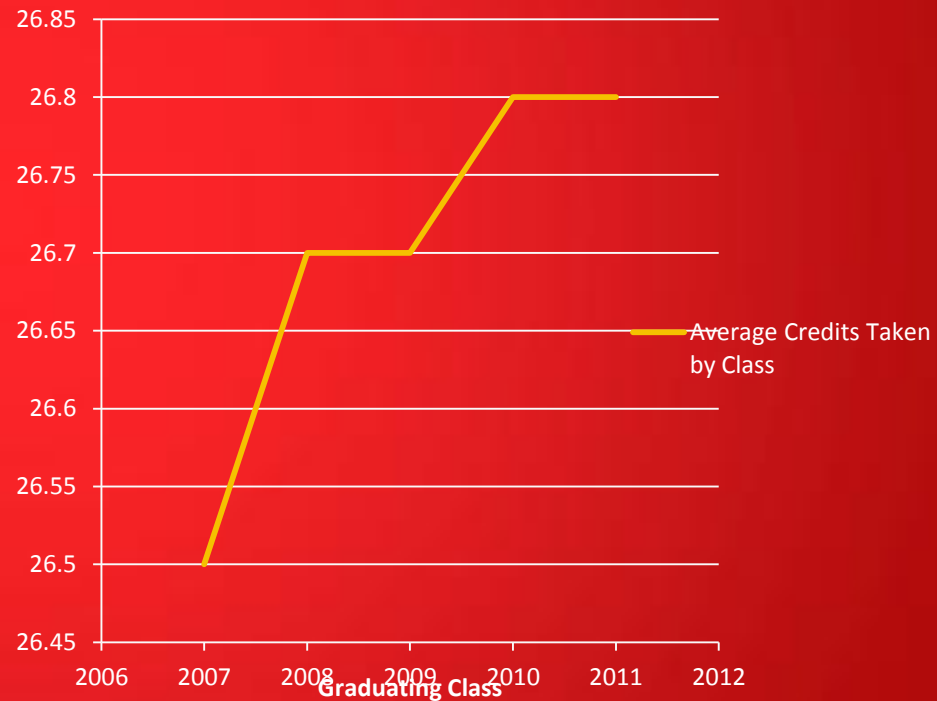
Credits Earned by Class of 2007-2011



Prepared for the Next Level

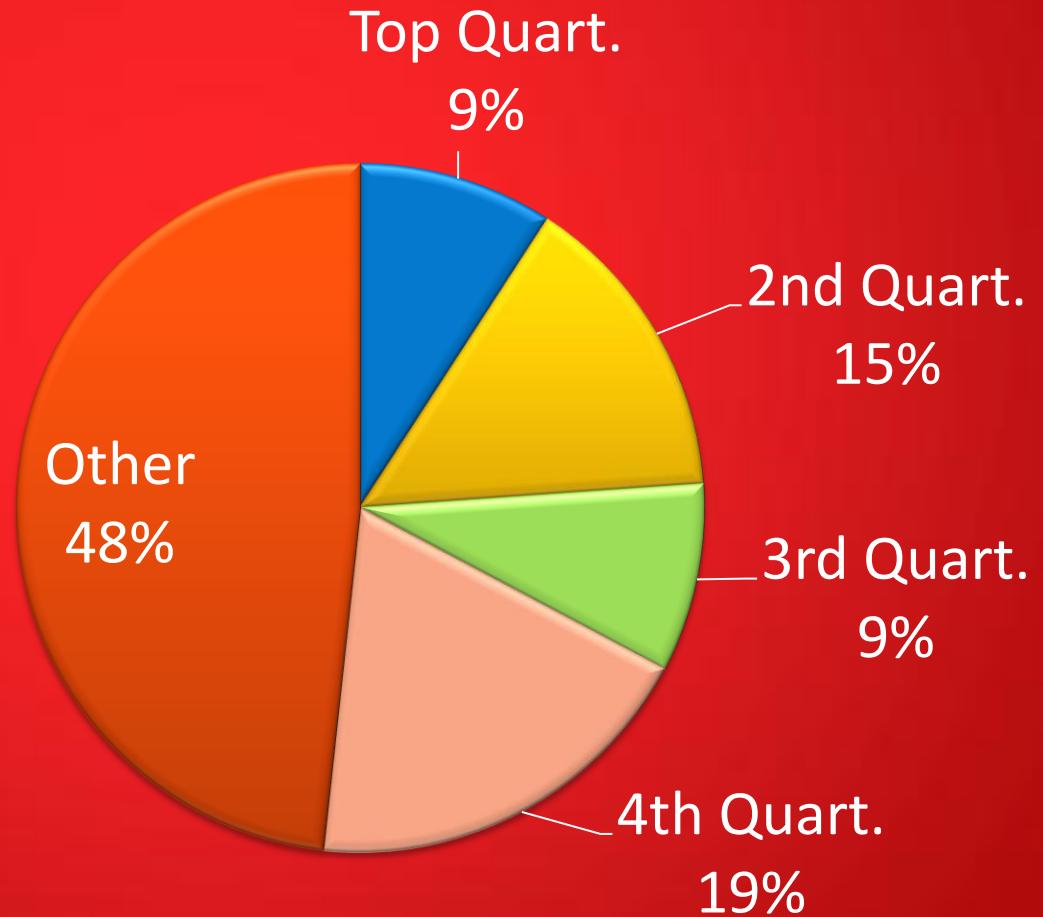
- The Average Central graduate goes to college with at least an extra semester of high school (this is extra Central education, too).

Average Credits Taken by Class



2011 Matriculation Data to Top 100 Colleges

U.S. News & World Report



Matriculation to Four and two year colleges & universities:

4-year placement=86.1%

2-year placement=10.3%

Other=2.3%

Class of 2012 Accolades

- **25** National Merit Semi-finalists (highest in last 10 years); **42** Commended scholars. This represents just under **10%** of the entire graduating class.
- **6** students earned a perfect 36 on the ACT.
- Every student in the top 50% of this year's graduating class has or is scheduled to take at least one AP course prior to graduation.

Active & Engaged Students

2012 GPA Class Profile:

- Upper 10% 69 students = 5.97-5.42
- Upper Quartile 172 students = 5.97-4.94
- 2nd Quartile 173 students = 4.93-4.31
- 3rd Quartile 172 students = 4.31-3.76
- 4th Quartile 173 students = 3.76-1.48

*24% have a cumulative GPA of 5.0 or better (A)

*66% have a cumulative GPA of 4.0 or better (B)

*93% have a cumulative GPA of 3.0 or better (C)